

Inspital examination lights can provide optimal lighting for examination procedures and minor surgeries.

## STANDARDS

**Classification** Class 1 (MDD 93/42 EEC)

**EU Conformity** CE

**Standards** EN 60601-1, EN 60601-2-41

## PACKAGE DIMENSIONS

36x138x38 cm - 4 kg

## MATERIAL SPECIFICATIONS

**Lamp Head** Polycarbonate

### LED Technology

- Advanced LED technology to fulfill lighting requirements of any kind of minor surgeries and examinations
- Well-focused lighting with LED bulbs connected to specially developed reflector
- Maintenance free LED technology
- Easily accessible ON / OFF switching and 5-stage dimming control

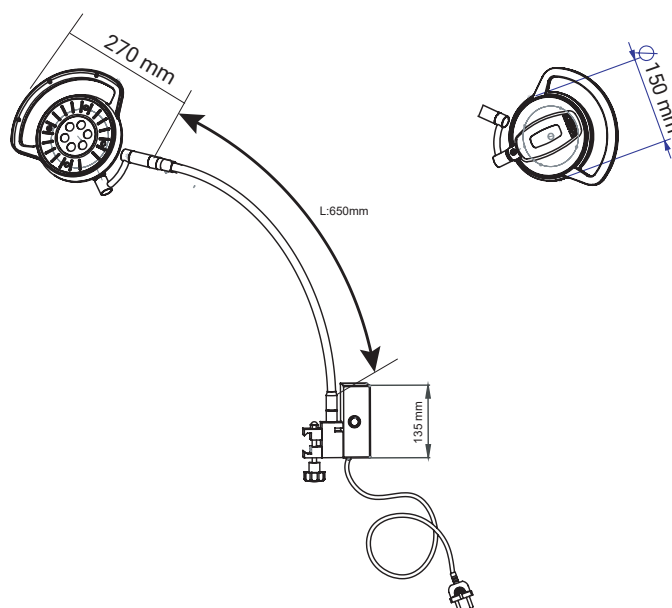
### Body Structure & Head Design

- Head can be positioned in required area and can be rotated 360° thanks to its spiral body structure
- Modern stylish and slim design

## TECHNICAL SPECIFICATIONS

Diameter of lighthouse	Ø150 mm
Illumination power, at 0,4 m	30.000 Lux
Color temperature	4500 K
Color rendering index, Ra CRI	95%
Number of LED Modules	6
LED Lifetime	>50.000 h
Dimming Control	5 stage
Input Voltage	220-240 VAC / 50-60 Hz
IP	IP40
Total power consumption (max)	12 W
Total weight	2,5 kg

## TECHNICAL DRAWING



Note: ± 25 mm tolerance is given for metric measurements and ± 5° tolerance is given for angle measurements.